

OSF – St Francis Hospital

Delta County  
Medical Control Authority



# Medical Control Authority

A Medical Control Authority is an organization designated by the department for the purpose of **supervising** and coordinating an emergency medical services **system**, as prescribed, adopted, and enforced through department-approved **protocols** for a particular geographic region.



# Statutory Authority

Part 209 of P.A. 368 of 1978, as amended, is the statute that defines Emergency Medical Services, Medical Control Authorities, life support agencies and personnel.





# EMS System



An EMS System is a comprehensive and integrated arrangement of **personnel, facilities, equipment, life support agencies, communications and medical control** necessary to provide emergency medical services and trauma care within a particular geographic region.



# Delta County Life Support Agencies

- \* Baldwin Twp Fire Dept Medical First Responders
- \* Guardian Flight
- \* Masonville Twp EMS
- \* Rampart EMS
- \* Rock Community Ambulance
- \* Tri-Star EMS



# Medical Control Authority

- \* MDHHS designates Medical Control Authorities for a geographic region.
- \* A Medical Control Authority is a hospital or group of hospitals that operates a 24/7 Emergency Department.
- \* A medical control authority shall be administered by the participating **hospital** of the designated medical control authority region.

# Medical Control Authority

A medical control authority shall:

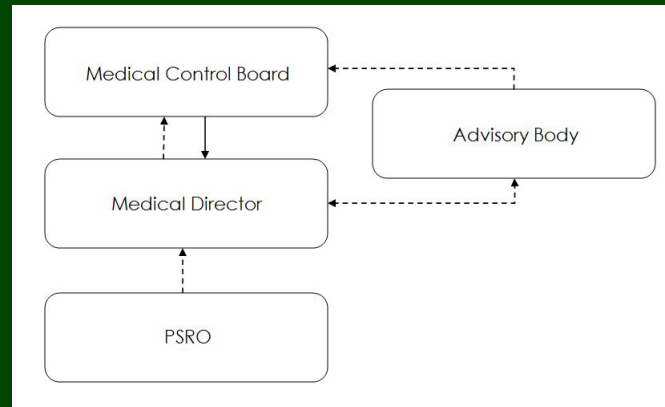
- \* Develop bylaws that define the medical control authority organizational structure
- \* Appoint a **medical control authority board** to administer the medical control authority.
- \* Appoint an **advisory body**.
- \* Appoint a **medical director**, with the advice of the advisory body.
- \* Appoint a **PSRO**.



# Advisory Body

Advisory Body appointed by the MCA shall:

- \* Advise the MCA on the appointment of the Medical Director.
- \* Advise the MCA on the development of **protocols**.



# Medical Director

- \* The Medical Director, appointed by the MCA, is an agent of the Medical Control Authority and is **responsible for medical control** for the EMS System.
- \* Medical Director is a physician who is board certified in emergency medicine ...
- \* It is the Medical Director's responsibility to ensure the provision of medical control.



# MCA Responsibilities

MCA's are responsible for:

- \* Establishing **written protocols** for the practice of life support agencies and EMS personnel.
- \* Ensuring physicians, hospital staff, and providers are educated on protocols.
- \* Adhere to protocols.
- \* Protocols adopted by the MCA and approved by the department **have the force and effect of law**.
- \* Licensed life support agencies and individuals are **accountable to the MCA** in the provision of emergency medical services as defined in protocols.

# Protocols

Protocols are:

- \* Established by the MCA
- \* Evidence based / best practice
- \* Approved by the Department

The protocols provide:

- \* **Patient Care Standards**
- \* Standing Orders
- \* Procedures
- \* Policies



# Medical Control

Off-Line Medical Control

*vs.*

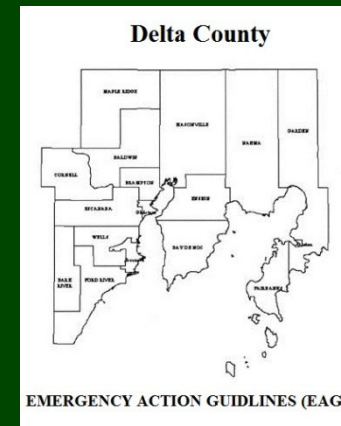
On-Line Medical Control

- \* Physicians or physician designees.
- \* Voice communication with providers.
- \* Hospitals are required to maintain a communication system that provides 2-way verbal communication.
- \* Hospitals receiving emergency patients shall be equipped to communicate on the HEAR/HERN frequency of 155.340

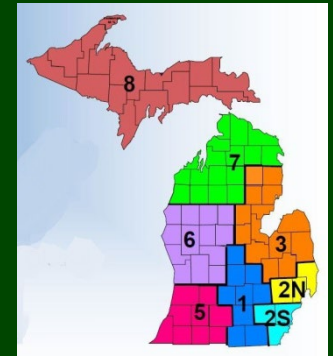
# Delta County

Delta County Medical Control Authority and:

- \* Emergency Operations Center
- \* Local Emergency Planning Council
- \* 911 Tactical Committee (Delta County Dispatch)
- \* Rescue Task Force



# Region 8



Delta County Medical Control Authority and:

- \* Medical Control Authority Network
- \* Regional Trauma Network
  - \* Regional PRSO
- \* Regional Trauma Advisory Committee
- \* Regional Hospital Preparedness Program

# State of Michigan

Delta County Medical Control Authority and:  
State of Michigan EMS Coordination Committee

- \* MCA Subcommittee
- \* Rural EMS Subcommittee
- \* Critical Care Transport Ad Hoc Committee
- \* Patient Movement Ad Hoc Committee

